



F752

Probe 100 mil Twist Proof, Plug-In

Centers (mm/mil)	2,54 / 100
Current	3,0 A
R typ	30 mOhm
Temperature	-20°C...+80°C

Spring Force (cN ±20%)

Version	Preload	Nominal
L	50	150
L	50	300
S	50	150

Travel (mm)

Version	Nominal	Maximum
L	4,0	5,0
S	4,0	5,0

Pointing Accuracy ±0,10 mm

Materials and Plating

Plunger	see Tip Style
Barrel	Brass, gold plated
Spring	Music wire, gold plated
Receptacles	Nickel silver, gold plated

Accessories

Insertion tool receptacle	FEWZ-772E0
---------------------------	------------

Drill Size (mm)

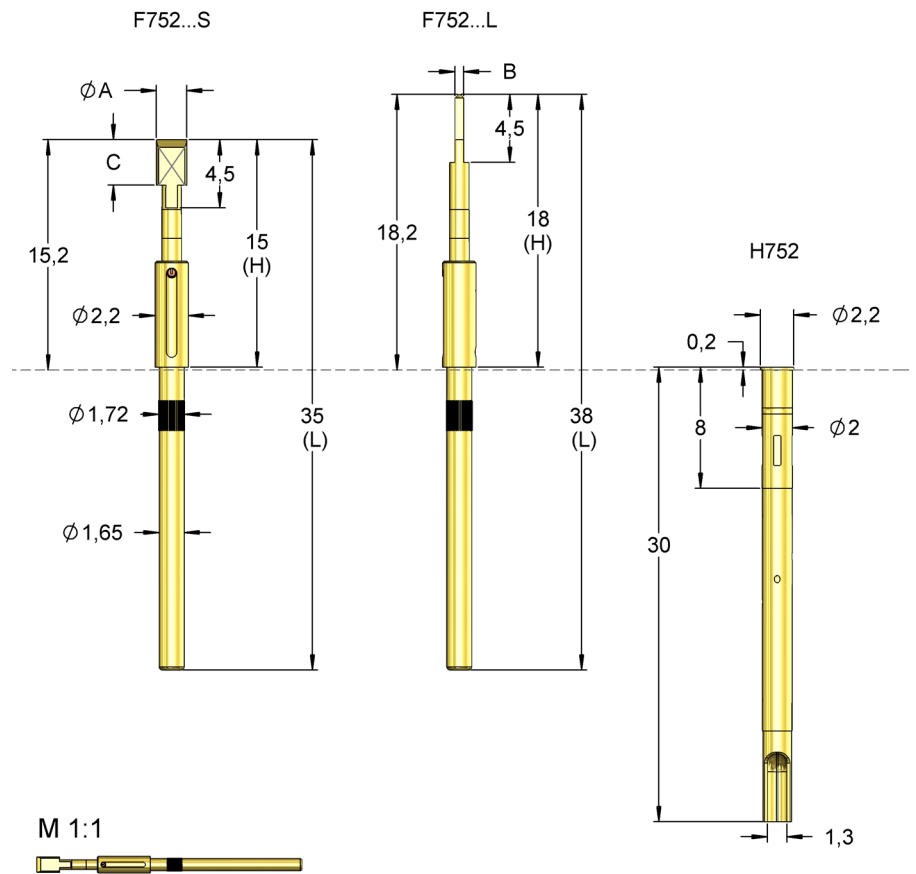
F752 without receptacle	1,66 - 1,70
H752	1,99 - 2,00

Projection Height (mm)

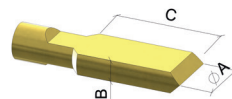
H752 with F752...S	15,2
H752 with F752...L	18,2

Series	Number	Spring Force (cN)
F752	84	150
	S	L
	0001	L
		L

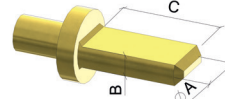
Material: S = Steel
Number: see table
Plating: L = Longtime gold plated
Version: S = Short version, L = Long version
Receptacle: Order code according drawing



KF84



KF89



Order code	Number	Ø A	B	C	H	L	Version
F75284S0005L150L	84	1,50	0,50	6,00	18,00	38,00	L
F75284S0002L150L	84	2,00	0,50	3,00	18,00	38,00	L
F75284S0004L150L	84	2,00	0,50	6,00	18,00	38,00	L
F75284S0004L300L	84	2,00	0,50	6,00	18,00	38,00	L
F75284S0001L150L	84	2,00	0,58	3,00	18,00	38,00	L
F75284S0003L150S	84	2,00	1,00	3,00	15,00	35,00	S
F75284S0007L150S	84	3,00	0,58	3,00	15,00	35,00	S
F75289S0001L150L	89	1,50	0,50	1,60	18,00	38,00	L