

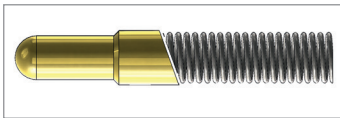
## F67311B2001G065

### Battery Contact for Direct Soldering on PCBs

<b>Centers (mm/mil)</b>	3,50 / 138
<b>Current</b>	5,0 A
<b>R typ</b>	<20 mOhm
<b>Temperature</b>	-45°C...+200°C (H)

This probe can also be mounted through a bore. The collar serves as a stop.

With Bias Design



#### Spring Force (cN ±20%)

Version	Preload	Nominal
Standard	10	65

#### Travel (mm)

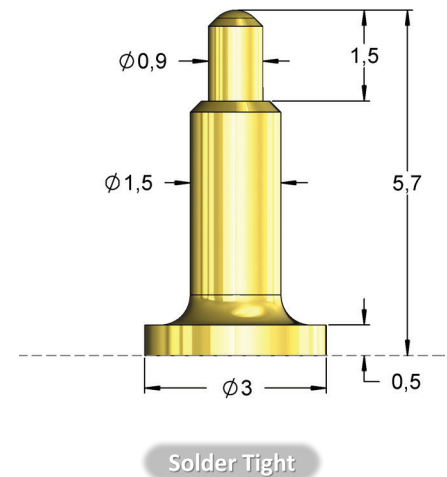
Version	Nominal	Maximum
Standard	1,0	1,5

#### Materials and Plating

Plunger	BeCu, gold plated
Barrel	Brass, gold plated
Spring	Stainless steel, unplated

#### Drill Size (mm)

Equal barrel-Ø 1,5	1,51 - 1,53
--------------------	-------------



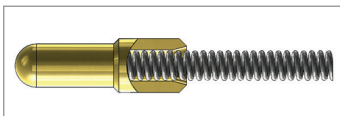
## F67311M0002G030

### Battery Contact for Direct Soldering on PCBs

<b>Centers (mm/mil)</b>	1,90 / 75
<b>Current</b>	4,0 A
<b>R typ</b>	<30 mOhm
<b>Temperature</b>	-45°C...+200°C (H)

This probe can also be mounted through a bore. The collar serves as a stop.

Design with drill hole plunger



#### Spring Force (cN ±20%)

Version	Preload	Nominal
Standard	25	30

#### Travel (mm)

Version	Nominal	Maximum
Standard	0,15	0,60

#### Materials and Plating

Plunger	Brass, gold plated
Barrel	Brass, gold plated
Spring	Stainless steel, unplated

#### Drill Size (mm)

Equal barrel-Ø 1,25	1,23 - 1,25
---------------------	-------------

