

# HIGH CURRENT PROBES

## 1860C005

**High Current Probe 433 mil  
Robust Version,  
up to 50 A, Threaded**

<b>Centers (mm/mil)</b>	11,0 / 433
<b>Current</b>	50,0 A
<b>R typ</b>	<6 mOhm
<b>Temperature</b>	-40°C...+200°C (H)

### Spring Force (cN ±20%)

Version	Preload	Nominal
C	200	530

### Travel (mm)

Version	Nominal	Maximum
C	5,0	7,0
Thread (M)	8x1 / 3,0	
Wrench Size	9,0 / 5,5	
Pointing Accuracy	±0,08 mm	

### Materials and Plating

Plunger	BeCu, gold plated
Barrel	Brass, unplated
Spring	Stainless steel, unplated

### Accessories

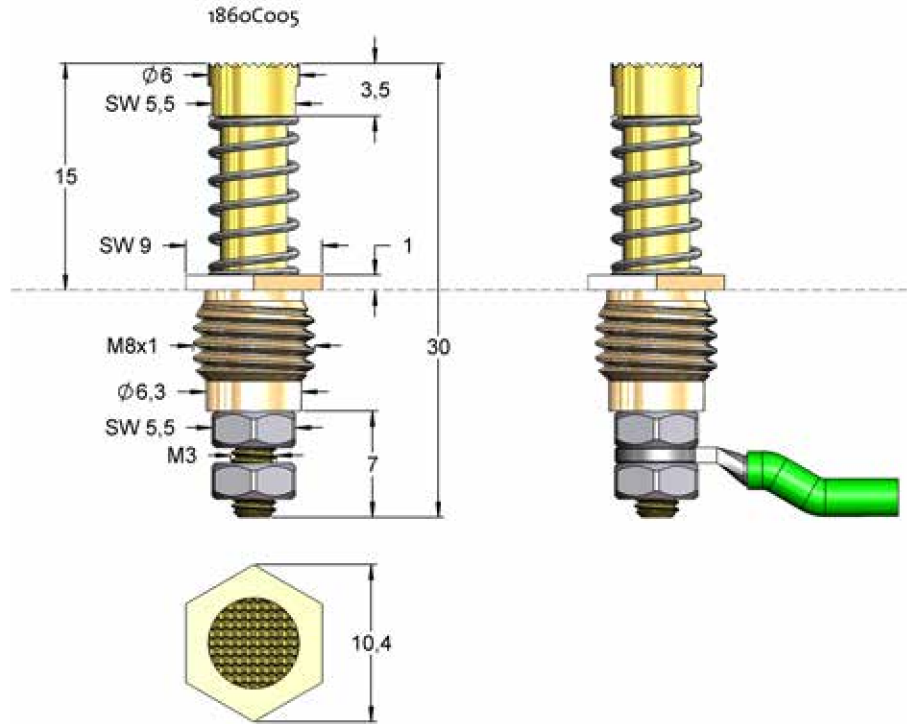
Insertion tool receptacle	FEWZ-348E0
Screw-in tool probe	FWZ348 (T)

### Drill Size (mm)

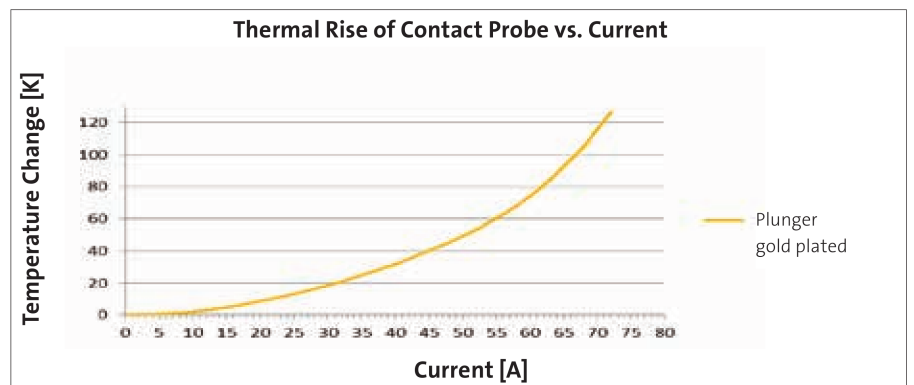
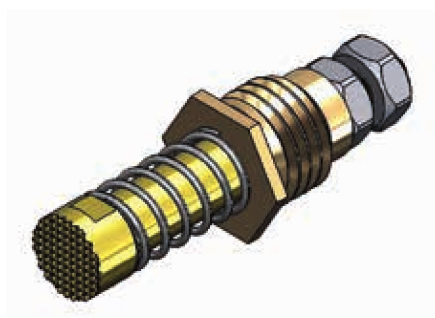
Barrel with knurl	10,95 - 10,99
-------------------	---------------

### Projection Height (mm)

1860C005	15,0
----------	------



Robust high current probe with continuous plunger. The M3 thread can be mounted with a counternut to a cable eye.



Order Code	Tip Style	Number	Material	Ø in mm	Plating	Version	Screw-in Tool
1860C005		06	B	6,00	G	C	-